

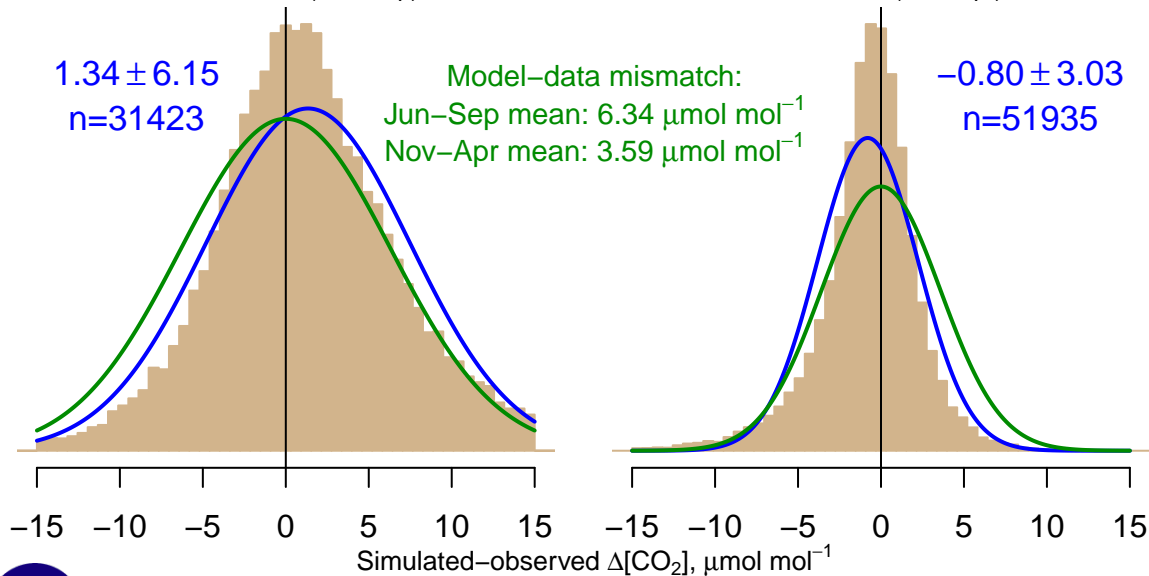
NH "Summer" (Jun–Sep)

NH "Winter" (Nov–Apr)

$1.34 \pm 6.15$   
 $n=31423$

Model–data mismatch:  
Jun–Sep mean:  $6.34 \mu\text{mol mol}^{-1}$   
Nov–Apr mean:  $3.59 \mu\text{mol mol}^{-1}$

$-0.80 \pm 3.03$   
 $n=51935$



Data from 01–Jul–2007 to 27–Feb–2021

co2\_wbi\_tower-insitu\_1\_allvalid-379magl  
CT2022, created 20–Jan–2023 19:01

