

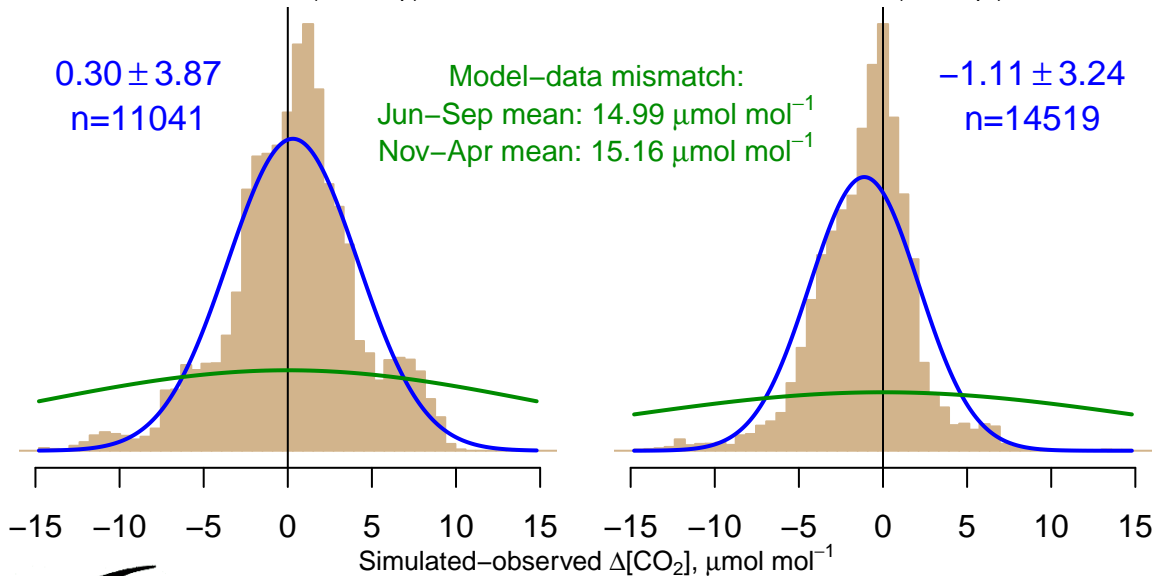
NH "Summer" (Jun–Sep)

$0.30 \pm 3.87$   
 $n=11041$

Model–data mismatch:  
Jun–Sep mean:  $14.99 \mu\text{mol mol}^{-1}$   
Nov–Apr mean:  $15.16 \mu\text{mol mol}^{-1}$

NH "Winter" (Nov–Apr)

$-1.11 \pm 3.24$   
 $n=14519$



Data from 15–Oct–2001 to 29–Mar–2012

co2\_brz\_aircraft-insitu\_20\_allvalid\_0–1000masl  
CT2022, created 20–Jan–2023 18:12

