

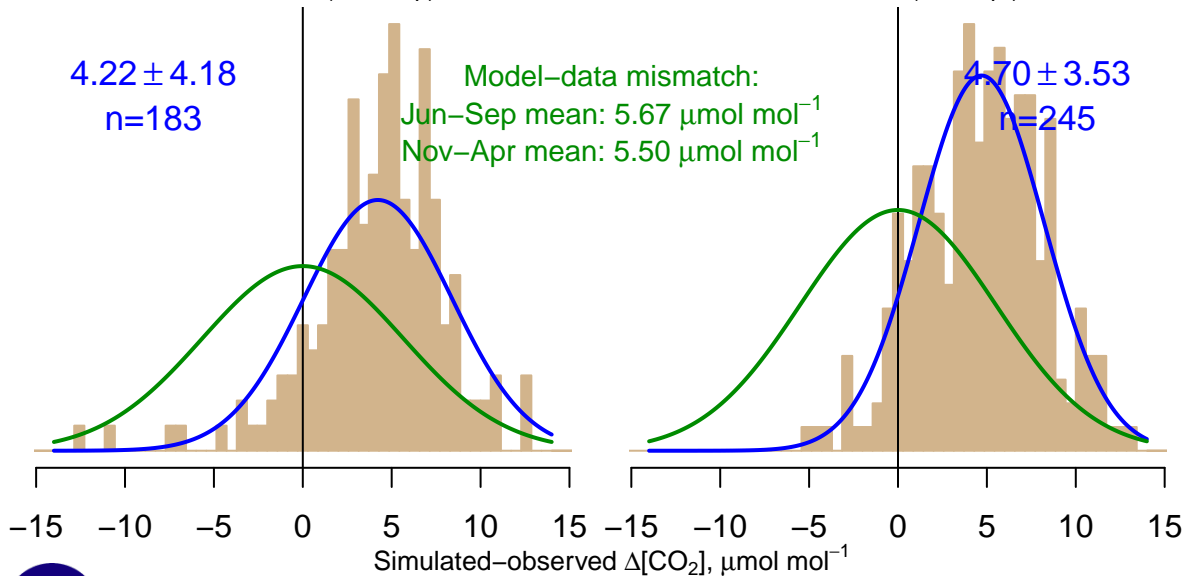
NH "Summer" (Jun–Sep)

4.22 ± 4.18
 $n=183$

Model–data mismatch:
Jun–Sep mean: $5.67 \mu\text{mol mol}^{-1}$
Nov–Apr mean: $5.50 \mu\text{mol mol}^{-1}$

NH "Winter" (Nov–Apr)

4.70 ± 3.53
 $n=245$



Simulated–observed $\Delta[\text{CO}_2]$, $\mu\text{mol mol}^{-1}$

Data from 08–Jan–2004 to 16–Feb–2021

