

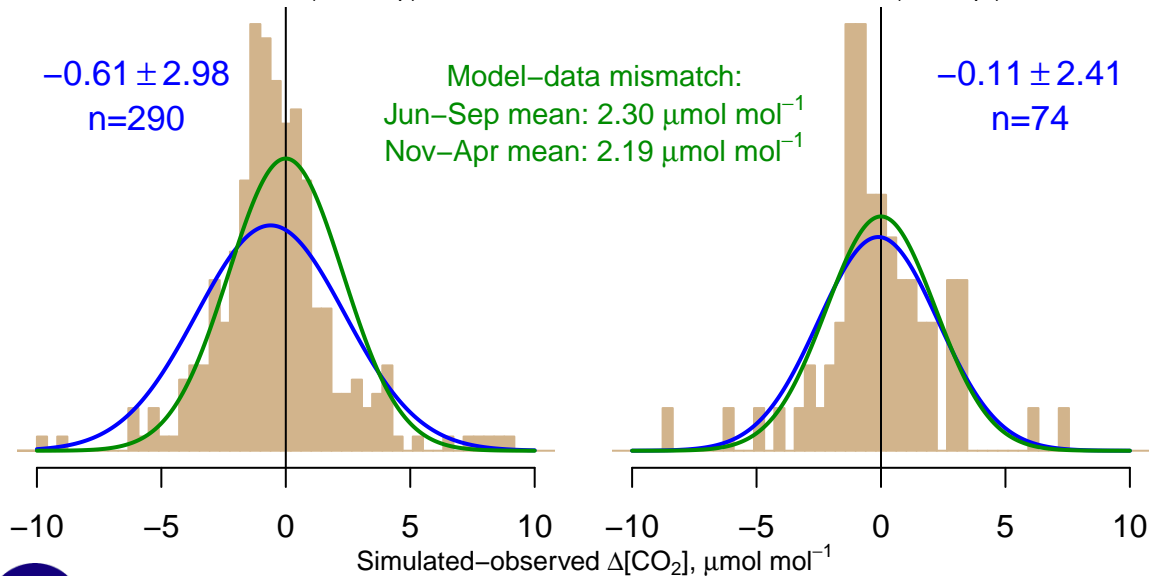
NH "Summer" (Jun–Sep)

-0.61 ± 2.98
 $n=290$

Model–data mismatch:
Jun–Sep mean: $2.30 \mu\text{mol mol}^{-1}$
Nov–Apr mean: $2.19 \mu\text{mol mol}^{-1}$

NH "Winter" (Nov–Apr)

-0.11 ± 2.41
 $n=74$



Data from 23–Jun–2009 to 26–Aug–2015

co2_acg_aircraft-pfp_1_allvalid_0–1000masl
CT2022, created 20–Jan–2023 18:04

